

MAIN SEAL INSTALL / REPLACEMENT INSTRUCTIONS

Connector Maintenance:

- A daily, weekly and periodic inspection of the connector by competent person is recommended. User must establish a regular interval for maintenance as determined by the user media and operational environment.
- Inspection should include visual checks of the sealing area, handle wear, missing or loose components, leak tightness, ease of operation, sufficient lubrication, wear, dirt accumulation and damage.
- Establish a regular interval for lubrication. The media and environment will be determining factors in establishing this interval to prevent dryness and/or corrosion.
- Difficulty of operation after continual use indicates a need for lubrication or other maintenance.
- Use only original **FasTest** spare parts that are designed for the application and are subject to strict quality control. See Warranty.

Safety Warnings – Guidelines:

- If instructions are not completely understood by operator or components are missing, contact **FasTest** before attempting use of the connector.
- Application Safety: All **FasTest** products have been designed with safety in mind, however, it is the responsibility of the product users to design each process in such a way to avoid mishaps that can cause physical hazard or property loss. Secondary restraints such as safety chains, shields, cages or fixtures are all good choices depending on the application. **FasTest** can recommend or assist you in clarifying potential hazards of your application.
- **FasTest ZN** Connectors are not internally valved, and will not prevent loss of media when disconnected. Do not attempt to disconnect unless safe conditions are met.
- **FasTest ZN** Connectors must only be used with test pieces of a specific size as indicated by the part number. Improper use could cause separation of the connector from the test piece resulting in physical harm or damage.

FasTest, Inc. Product Warranty

FasTest, Inc. warrants its products against defects of workmanship and/or material for 90 DAYS from the date of the sale by FasTest, Inc. This warranty is void if the product is misused, tampered with or used in a manner that is not in accordance with FasTest, Inc. recommendations and/or instructions. FasTest, Inc. is not liable for consequential or other damages including, but not limited to, loss, damage, personal injury, or any other expense directly or indirectly arising from the use of or inability to use its products either separately or in combination with other products. ALL OTHER WARRANTIES EXPRESSED OR IMPLIED, WHETHER ORAL OR WRITTEN, INCLUDING BUT NOT LIMITED TO WARRANTIES OR MERCHANTABILITY OR FITNESS FOR A PARTICULAR PURPOSE ARE EXPRESSLY EXCLUDED.

Remedy under this warranty is limited to replacement of the product or an account credit in the amount of the original selling price, at the option on FasTest, Inc. All allegedly defective products must be returned prepaid transportation to FasTest, Inc. along with information describing the products performance, unless disposition in the field is authorized in writing by FasTest, Inc.

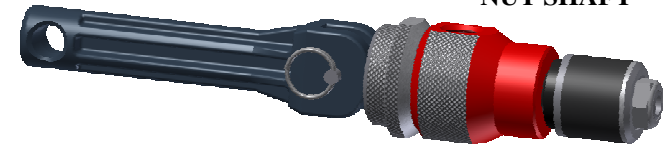
ZN Main Seal Replacement Instructions

Description: *Main Seal Replacement Procedure for ZN Series Connectors*

**ZN1 MODEL
BOLT SHAFT**



**ZN2, 3 & 4
MODEL
NUT SHAFT**



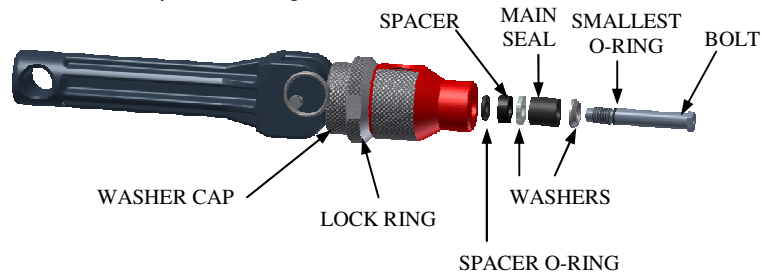
Please thoroughly read and understand these seal replacement instructions prior to dis-assembling the **ZN** connector.

- Dis-Assembly
- Seal Installation
- Re-Assembly
- Function Check
- Connector Maintenance
- Safety Warnings – Guidelines

MAIN SEAL INSTALL / REPLACEMENT INSTRUCTIONS

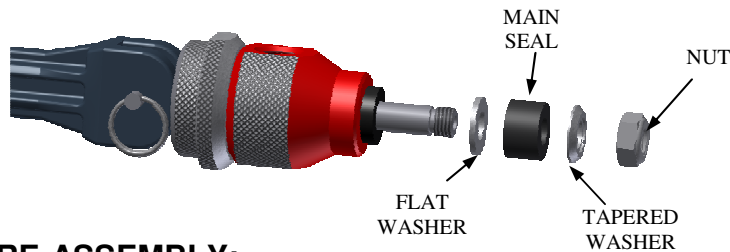
ZN1 DIS-ASSEMBLY:

1. ZN1 Connectors utilize a hex bolt shaft. Thread washer cap and lock ring forward (ALL SIZES) until it touches body. Using a 1/4" wrench or socket remove bolt. Hold handle from spinning as bolt is loosened and removed. Remove smallest o-ring in groove on bolt and discard. Discard washers, main seal and spacer o-ring.



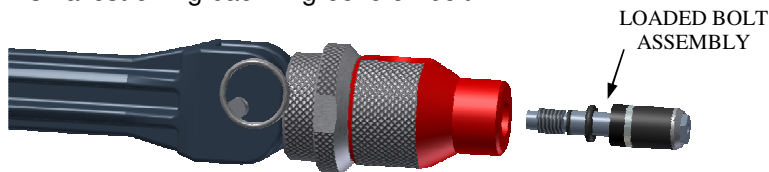
ZN2, 3 & 4 DIS-ASSEMBLY:

2. These three ZN sizes utilize the hex nut to retain seal sets. Thread washer cap and lock ring forward until it touches body. Hold handle from spinning as nut is loosened and removed. Remove and discard main seal, spacer o-ring and washers. **NOTE: Washers and nuts can typically be re-used.**



ZN1 RE-ASSEMBLY:

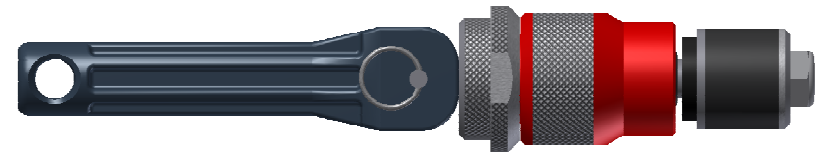
3. Load bolt with new seal kit parts, tapered washer, main seal and flat washer. Then slide the spacer and o-ring back onto bolt and place smallest o-ring back in groove on bolt.



4. Loaded Bolt Assembly threads into an internal shaft. Using same 1/4" wrench or socket. Tighten until you feel a hard stop. Bolt threads into a hard stop inside the internal shaft.

ZN2, 3 & 4 RE-ASSEMBLY:

5. Load shaft with new seal kit parts, spacer o-ring, flat washer, main seal(s) and tapered washer. Thread new nut back on shaft and tighten with wrench or socket. Tighten nut until you feel a hard stop.



FUNCTIONAL CHECK:

Prior to applying pressure to the termination port rotate handle in both directions. Make sure connector draws shaft back and compress's seal(s) as it did prior to dis-assembly.

• CAUTION NOTES;

- CAUTION: The maximum rated pressure is stamped on the connector body. Before using, verify that this pressure rating is within your working pressures.
- **WARNING: Tug on the connector to assure proper engagement and gripping before introduction of pressurized media.**
- **DO NOT** force connector onto test part when connecting. Forcing the connector will result in poor sealing and possible leakage.
- **DO NOT** spin test piece on seal once lever has been rotated 90° degrees.