



**PROCESS FASTER.
MINIMIZE REFRIGERANT LOSS.**
NEW ACCESS PORTS + PROCESSING TOOLS



NEW

COREMAX[®]

Access Ports & Processing Tools

Faster Evacuation | Faster Charging | Accessibility | Reliability

"The Original" CoreMax Faster Processing of Systems Requiring Schrader[®] Valves

NEW CoreMax XL Faster Evacuation of Large Capacity Packaged Systems

NEW CoreMax PT Easy Access for Small Systems Using Process "Stub" Tubes

Compatible with Current and Next Generation Refrigerants.

COREMAX^{XL}

CoreMax XL Access Port

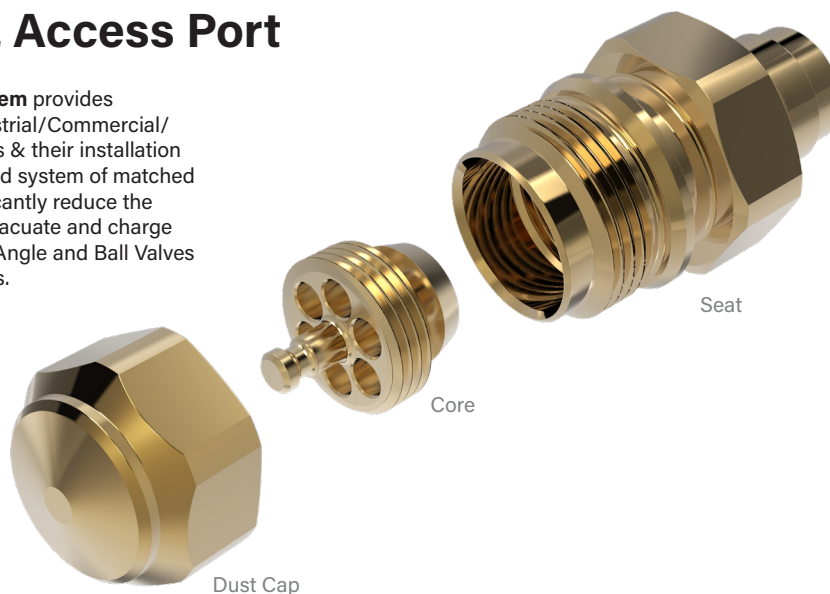
The **NEW CoreMax XL System** provides manufacturers of large Industrial/Commercial/VRF(V) refrigeration systems & their installation contractors with an optimized system of matched components that will significantly reduce the time required to leak test, evacuate and charge vs. commonly used Packed Angle and Ball Valves in large refrigeration systems.

Applications:

Large Industrial & Commercial Refrigeration Package Systems

- Ice Rinks
- Trans-Critical CO₂
- VRF/VRF Plumbing
- Chillers/Air Handlers

Anywhere Packed Angle/Ball Valves are used.



True metal to metal hermetic sealing in two places eliminates refrigerant loss

High flow design can speed up evacuation by up to 45% result in faster "Takt Time"

Turn-key, an integrated system of properly matched components from one supplier

Easily integrated into piping system & requires no new processes

Reduced number of access ports and associated costs

Compatible with current & next generation refrigerants including high-pressure transcritical CO₂ systems (rated to 2031 psig/140 bar)

CoreMax XL Tools

CoreMax XL Processing Tools are designed to work seamlessly with the CoreMax XL Access Port in all processing stages (Leak/Proof Test, Evacuation, Charging, Run Test, Final Fill & Reclaim/Rework). Together they form a flexible system that shortens processing times, while improving the quality of refrigeration products.

Leak/Proof Test

CoreMax XT Evacuation Tool

PN: CMFT60



- Use at Leak/Proof Test stations. Latches to the CoreMax XL Seat.
- Smooth connect/disconnect action.

Evacuation

CoreMax XT Evacuation Tool

PN: CMFT80



- Use at Evacuation stations. Latches to CoreMax XL Seat.

Charge

CoreMax XT Charge Tool

PN: CMFT70



- Use at Charge stations. Latches to CoreMax XL Seat.

**MILLIONS OF UNITS
IN SERVICE**

"The Original"

COREMAX

CoreMax Access Valve

The **CoreMax Access Valve & Seat System** provides up to five times greater processing flow than common Schrader® Valves and the integral shut off valve has dramatically improved sealing performance.

Plus, the 1/4 flare profile is compatible with standard processing and service tools.

Applications:

Residential Packaged Units

Small Commercial Packaged Units

Commercial Ice Makers

Food Merchandizing Cases

Swimming Pool Heat Pumps

Anywhere a High-Flow Access Valve is used.



Increased flow up to 5x

Safe and ergonomic connections - Zero safety claims

Increased throughput
- 30% reduction in processing time of 30 ton units

Reduced warranty costs
- 99% drop in rework and warranty claims

Reduced repair costs -
80% decrease in tooling investment and 50% decrease in maintenance costs

Compatible with R-22, R404, R410A, R-407C, R-134A, and next generation refrigerants

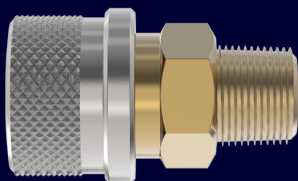
CoreMax Tools

CoreMax Processing Tools are designed to work seamlessly with the **CoreMax Access Valve** in all processing stages (Leak/Proof Test, Evacuation, Charging, Run Test, Final Fill & Reclaim/Rework). Together they form a flexible system that shortens processing times, while improving the quality of refrigeration products.

Leak/Proof Test

CoreMax MBE

PN: SCM062W

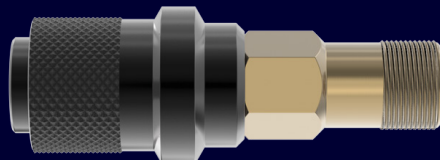


- Use at Leak/Proof Test stations. Latches to the CoreMax Seat.

Evacuation

CoreMax OEM SnapMate™

PN: SCP062H

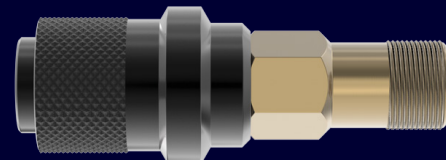


- CoreMax OEM SnapMate can be used at any process station to connect and open the CoreMax Valve, including evacuation.

Charge

CoreMax OEM SnapMate™

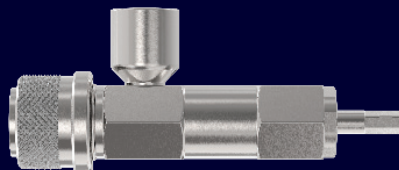
PN: SCP062H



- CoreMax OEM SnapMate can be used at any process station to connect and open the CoreMax Valve, including refrigerant charge.
- An internal shut off valve stops flow when disconnected.
- Smooth connect/disconnect action.

CoreMax Core Insertion Tool

PN: SCFT10



- will result in the fastest evacuation rate vs. OEM SnapMate.

COREMAX PT

CoreMax PT Access Port

The **NEW CoreMax PT System** is specifically designed to eliminate the need for Process "Stub" Tubes, while adding easy access without sacrificing hermetic metal-to-metal sealing.

CoreMax PT has the capability for near zero emission processing and field servicing, and is compatible with both current and next generation refrigerants.

Applications:

PTAC/VTAC Units
Ducted Split Systems
Commercial Display Units
Refrigerators
Mini-Splits

Anywhere a Process Stub Tube is used.



Safer processing of flammable (A2 & A3) refrigerants

Cost reducing elimination of Process/Stub Tubes and the pinch & weld operation

Increased product quality

Accessibility while providing a hermetic metal to metal seal

Complete Processing Tool System is easy to use and optimizes manufacturing efficiency

CoreMax PT Tools

The **CoreMax PT Processing Tools** are designed to work seamlessly with the **CoreMax PT Access Port** in all processing stages (Leak/Proof Test, Evacuation, Charging, Run Test, Final Fill & Reclaim/Rework). They work together with the Access Port to optimize your processing while adding easy rework and field accessibility.

Leak/Proof Test

CoreMax PT MBE

PN: CMPT10



- Connects directly to CoreMax PT Seat.
- Non-valved

Evacuation

CoreMax PT Traveler

PN: CMPT40



- Connect to CoreMax PT Seat
- Traveler remains connected until processing is complete.

CoreMax PT MBV

PN: CMPT20



- Connect MBV to Traveler for evacuation process.

Charge

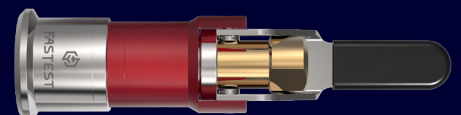
CoreMax PT Traveler

PN: CMPT40



CoreMax PT RQD

PN: CMPT30



- Connect RQD to traveler at charging station.



Degassing & Dehydrating refrigeration systems, often referred to as "Evacuating", is a time consuming process, often taking many hours in large systems.

The **CoreMax Evac Cart** vacuum system provides manufacturers with an optimized system of matched components that will minimize evacuation time. It combines that with real time data analytics and analysis capability, that will allow you to improve your process on an ongoing basis - speeding takt time, reducing cost and improving quality.

Can be used with any CoreMax Access Port system or anywhere an optimized vacuum system is required.



Configurable with single or multiple hoses and various vacuum pump capacities.

- A turn-key, integrated vacuum system of properly matched components from one supplier
- Manual and automated versions available. Set target vacuum, vacuum decay limits and monitor in real time.
- Data acquisition facilitates process improvement and optimization
- Lockable storage cabinets safely store components when not in use. Full line of accessories to meet your needs.
- Reduced evacuation time leading to improved production "Takt Time"
- Mobile cart can be used in plant, at installation site and for service.
- Easy to use intuitive design and durable construction will provide years of reliable service

FASTEST GLOBAL DISTRIBUTION NETWORK



Application Experts



Quality Improvement



Standard and Customs



Intelligent Tools



Designed in the U.S.A.

Headquarters | USA

1646 Terrace Drive, Roseville, MN, 55113-1317

Phone: 651.645.6266 • Fax: +1.651.645.7390 • www.fastestinc.com

Shenzhen | China

Room#1013,1015, A9 Building, Tianrui Industrial Park

No.35 Fuyuan 1st Road, FuHai residential district,
Baoan Shenzhen, China 518103

(755) 27084905 • fastsalescn@fastestusa.cn