

# NuJaws JNL



NuJaws JNL



FI



Twistmate



FasMate



WEH 17



WEH 05



IGES

## Product Selector Guide for Internal Connections

Click connector for more information

### Description

NuJaws® JNL Lever action connector provides an instant, leak tight connection for evacuation or pressure applications such as leak testing, proof testing and other processes. Generally applied best in applications requiring easy action internal grip and seal connections, without operator adjustment, to 1,000 psi. This unique design uses the system pressure to enhance sealing and gripping for added reliability and safety. The connector contains only one seal which is easily replaced without disassembly.

**For more details click here**

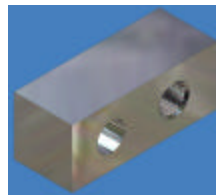
### Pressure range

Vacuum to 1,000 psi

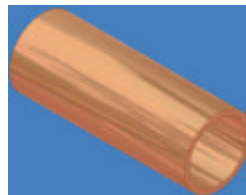
### Operation style

Pneumatic actuation

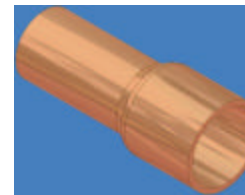
### Size Range



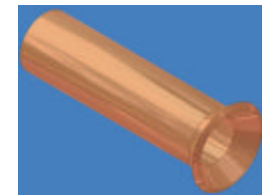
Cavity  
.310" to 3.005" ID



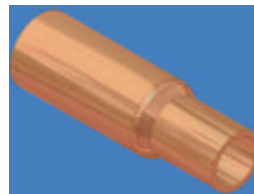
Straight  
.310" to 3.005" ID



Expanded  
.310" to 3.005" ID



Flared  
.310" to 3.005" ID



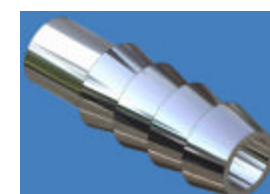
Swaged  
.310" to 3.005" ID



Formed End  
.310" to 3.005" ID



Beaded  
.310" to 3.005" ID



Barbed  
.310" to 3.005" ID

FI



NuJaws JNL



FI



Twistmate



FasMate



WEH 17



WEH 05



IGES

# Product Selector Guide for Internal Connections

Click connector for more information

## Description

FI Pneumatic pressure is used to activate an elastomer creating an instant, leak tight seal. Generally applied best in automated or semi-automated applications where speed is a priority. Seals are readily achieved on rough surfaces or on the face of threaded ports with increased activation pressure. Can be used unfixtured in low pressure or vacuum applications where inadvertent separation would not be a hazard. Connectors can be supplied with extensions to permit use in tighter confines.

[For more details click here](#)

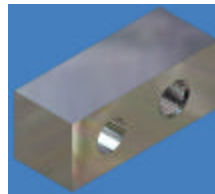
## Pressure range

Vacuum to 120 psi

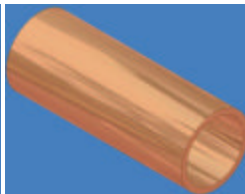
## Operation style

Pneumatic actuation

## Size Range



Cavity  
.310" to 3.005" ID



Straight  
.310" to 3.005" ID



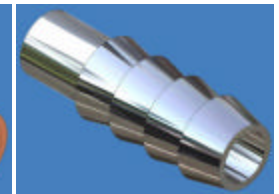
Expanded  
.310" to 3.005" ID



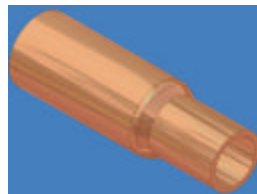
Flared  
.310" to 3.005" ID



Beaded  
.310" to 3.005" ID



Barbed  
.310" to 3.005" ID



Swaged  
.310" to 3.005" ID



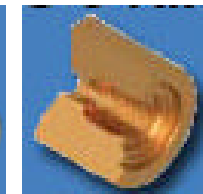
Formed End  
.310" to 3.005" ID



NPTF 1/8 to 2 1/2"



SAE O-Ring  
7/16"-20 to 2 1/2"-12



ISO O-Ring  
M10-M60



BSP  
1/8 to 2 1/2"

# Twistmate



NuJaws JNL



FI



Twistmate



FasMate



WEH 17



WEH 05



IGES

## Product Selector Guide for Internal Connections

Click connector for more information

### Description

Twistmate® MIT Manually threaded connectors for threaded parts. Generally applied best in smaller volume production lots where quick changeover is required. Lower cost product recommended where speed is not the priority. Seals with a tough urethane o-ring at the threaded face; for best results the part should have a smooth face which is perpendicular to the thread. Irregular, small or rough surfaces may require a custom solution. Connectors are readily adapted with other Twistmates, quick disconnect couplings or thread adapters to suit almost any application requirement.

**For more details click here**

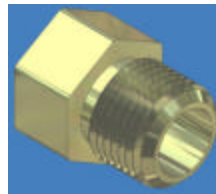
### Pressure range

Vacuum to  
10,000 psi

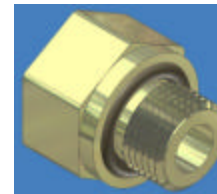
### Operation style

manual  
operation  
quick  
threading

### Size Range



NPTF 1/8 to 2 1/2"



SAE O-Ring  
7/16"-20 to 2 1/2"-12



ISO O-Ring  
M10-M60



BSP  
1/8 to 2 1/2"

# FasMate



NuJaws JNL



FI



Twistmate



FasMate



WEH 17



WEH 05



IGES

# Product Selector Guide for Internal Connections

Click connector for more information

## Description

Insert the connector into the threaded port and activate the clamping lever for an instant connection. Generally applied best when speed is desired or where will be exposed to side load and dynamic pressure cycles. Seals with an O-ring at the threaded face; for best results the port should have a smooth face which is perpendicular to the thread. Cast, irregular, or rough surfaces may require a custom solution. The media port is readily adaptable for quick changeover to other threaded port sizes on your production line.

**For more details click here**

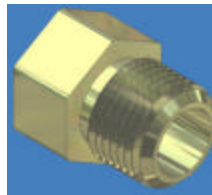
## Pressure range

Vacuum to 5,000 psi

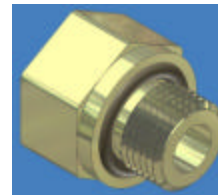
## Operation style

Manual clamping lever

## Size Range



NPTF 1/8 to 2 1/2"



SAE O-Ring  
7/16"-20 to 2 1/2"-12



ISO O-Ring  
M10-M60

# WEH 17



NuJaws JNL



FI



Twistmate



FasMate



WEH 17



WEH 05



IGES

# Product Selector Guide for Internal Connections

Click connector for more information

## Description

Activate the connector either with a squeeze lever or pneumatic pressure; insert connector into the port and release the actuator. Generally applied best when speed or pneumatic operation is preferred. Not recommended for heavy side-load connections or dynamic pressure cycles. Seals with an O-ring at the threaded face; for best results the port should have a smooth face which is perpendicular to the thread. Cast, irregular, or rough surfaces may require a custom solution. The media port is readily adaptable for quick changeover to other threaded port sizes on your production line.

**For more details click here**

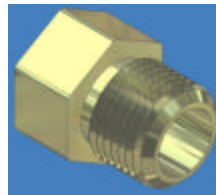
## Pressure range

0 to 5,000 psi

## Operation style

Manual or pneumatic operation

## Size Range



NPTF 1/8 to 1"



SAE O-Ring  
7/16"-20 to 2 1/2"-12



ISO O-Ring  
M10-M60



BSP  
1/8 to 2 1/2"

# WEH 05



NuJaws JNL



FI



Twistmate



FasMate



WEH 17



WEH 05



IGES

## Product Selector Guide for Internal Connections

Click connector for more information

### Description

Sleeve activated connector which is internally valved for instant connection and pressure testing in one motion. Generally applied best for rapid connections for run testing where the media is compressed air. Seals with an O-ring at the thread face; for best results the port should have a smooth face which is perpendicular to the thread. Cast, irregular or rough surfaces may require a custom solution. Not recommended for pressure decay or mass spectrometer testing.

[For more details click here](#)

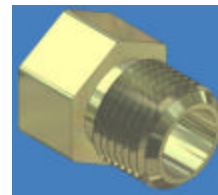
### Pressure range

50 to 175 psi

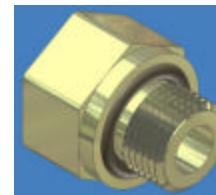
### Operation style

Manual sleeve with pneumatic assist

### Size Range



NPTF  
1/8" to 1"



SAE O-Ring  
7/16"-20 to 1-5/16"-12



BSP  
1/8" to 1"

# IGES



NuJaws JNL



FI



Twistmate



FasMate



WEH 17



WEH 05



IGES

## Product Selector Guide for Internal Connections

Click connector for more information

### Description

Internal Grip, External Seal lever action connectors provide instant leak tight connections for rifle tube applications. Designed for helium leak testing, proof testing, pressure decay and other related processes. The easy cam lever action with the patented pressure assisted gripping and sealing, locks the connector when pressurized to make safe, secure instant connections with no operator adjustment needed.

[For more details click here](#)

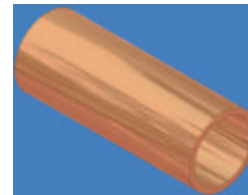
### Pressure range

Vacuum to 450 psi

### Operation style

Manual clamping lever

### Size Range



Rifled  
.312" to .375 ID