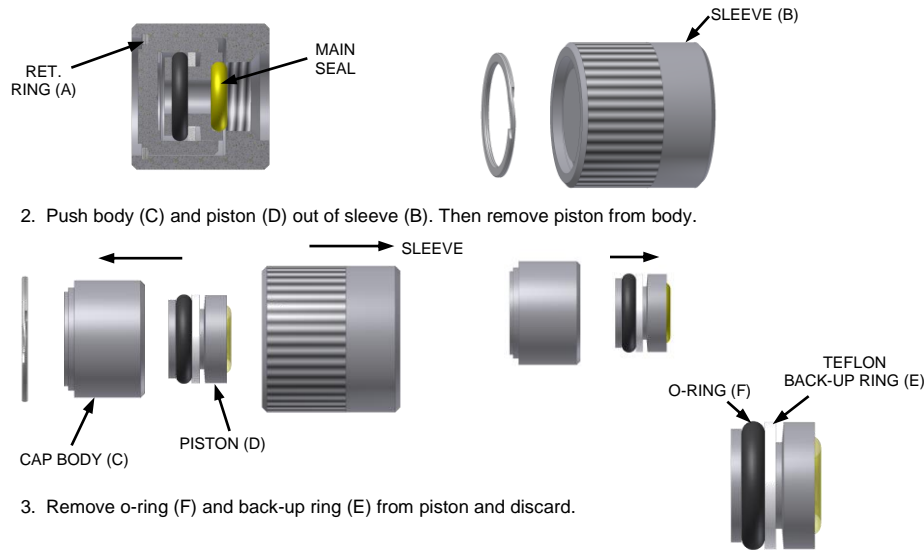


REPLACEMENT INSTRUCTIONS



1. Cap Connector Seal Replacement:

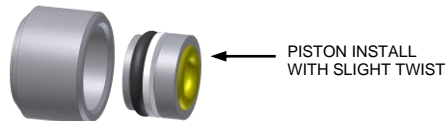
1. Using a sharp stiff pick remove ret. ring (A) from connector and discard.
NOTE: WHEN THE END OF THE RING IS FREE 'WALK' RING OUT OF GROVE WITH PICK.



4. Before Installing new back-up ring and o-ring make sure piston and inside of body are clean and free of dust and dirt.
5. Install new back-up ring as shown on piston. Then lubricate new o-ring with petroleum jelly and install as shown.



6. Install piston with new o-ring and back-up ring into body with a slight twist as you push into body.

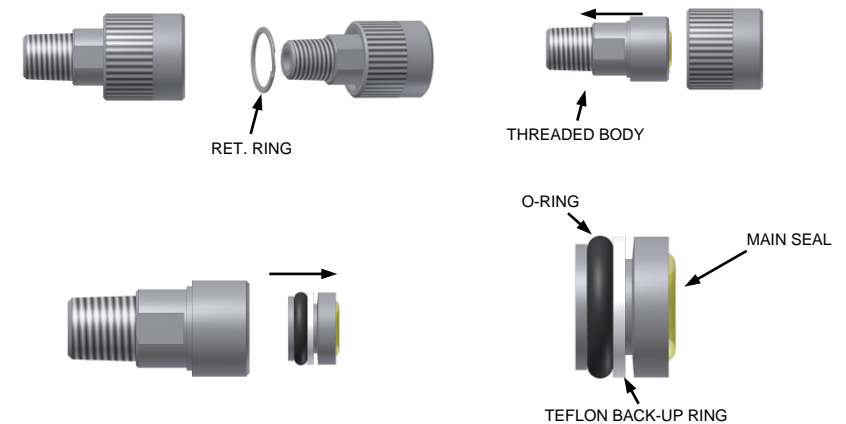


7. Slide body/piston assembly into sleeve and install new ret. ring, making sure it is completely seated in its groove.

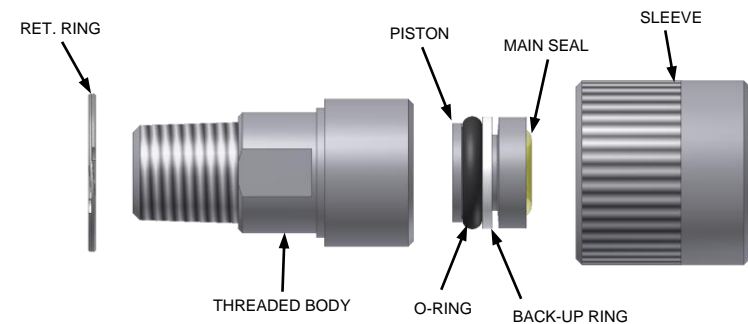


2. Threaded Body Connector Seal Replacement:

1. Cap and Threaded Body dis-assembly procedure are virtually the same.
2. Ret. Ring, O-ring and Back-up ring are all removed and replaced the same on the Cap and Threaded style connectors.



EXPLODED VIEW OF THREADED BODYCONNECTOR



TwistMate

Roseville, MN
Ph: 1-800-444-2373
Fax: 651-645-7390
www.fastestinc.com
WP111 Rev B 8/5/2019

REPLACEMENT INSTRUCTIONS



CONNECTOR MAINTENANCE:

- A daily, weekly and periodic inspection of the connector by competent person is recommended.
- User must establish a regular interval for maintenance as determined by the user media and operational environment.
- Inspection should include damage to the body missing or loose components, leak tightness, ease of operation, sufficient lubrication, wear, dirt accumulation and damage.
- Inspect threads for wear.
- Use only original **FasTest** spare parts that are designed for the application and are subject to strict quality control. See Warranty.
- Lubricate on regular intervals under normal operating conditions. Lubrication should be compatible with user application.

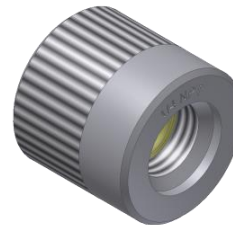
FasTest, Inc. Product Warranty

FasTest, Inc. warrants its products against defects of workmanship and/or material for 12 months from the date of the sale by FasTest, Inc. This warranty is void if the product is misused, tampered with or used in a manner that is not in accordance with FasTest, Inc. recommendations and/or instructions. FasTest, Inc. is not liable for consequential or other damages including, but not limited to, loss, damage, personal injury, or any other expense directly or indirectly arising from the use of or inability to use its products either separately or in combination with other products. ALL OTHER WARRANTIES EXPRESSED OR IMPLIED, WHETHER ORAL OR WRITTEN, INCLUDING BUT NOT LIMITED TO WARRANTIES OR MERCHANTABILITY OR FITNESS FOR A PARTICULAR PURPOSE ARE EXPRESSLY EXCLUDED.

Remedy under this warranty is limited to replacement of the product or an account credit in the amount of the original selling price, at the option of FasTest, Inc. All allegedly defective products must be returned prepaid transportation to FasTest, Inc. along with information describing the products performance, unless disposition in the field is authorized in writing by FasTest, Inc.

METR *TwistMate* Internal Seal Replacement Instructions.

Description: Internal Seal and Back-Up Ring Replacement Instructions for NPT, JIC and SAE O-Ring Boss Connectors.



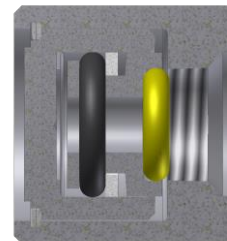
CAP CONNECTOR



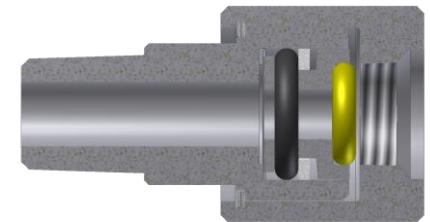
CONNECTOR

Please thoroughly read the following steps on properly replacing seals and back-up rings on MET Connectors.

1. MET Cap Connector Internal Seal Replacement.
2. MET Connector Internal Seal Replacement.



CAP CROSS-SECTION



CONNECTOR CROSS-SECTION

NOTE: MAIN SEALS SOLD SEPARATELY

WARNING: If instructions are not clear or components are missing, contact factory before using connector.

TwistMate

Roseville, MN
Ph: 1-800-444-2373
Fax: 651-645-7390
www.fastestinc.com
WP111 Rev B 8/5/2019