



FASTEST[®]
SAFE. RELIABLE. FAST.

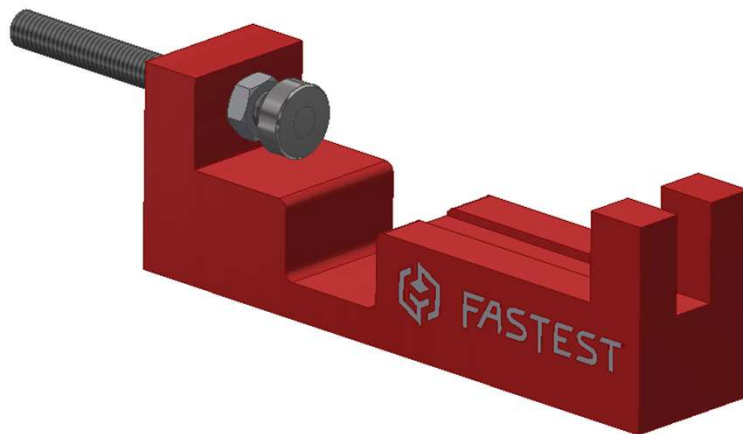
SPCTFNFSSR

Calibration Tool for FNP & FXP w/SSR

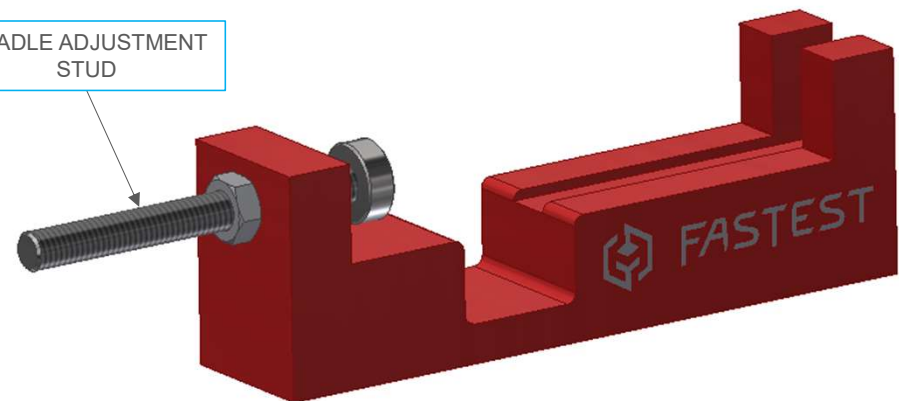
02/07/2022

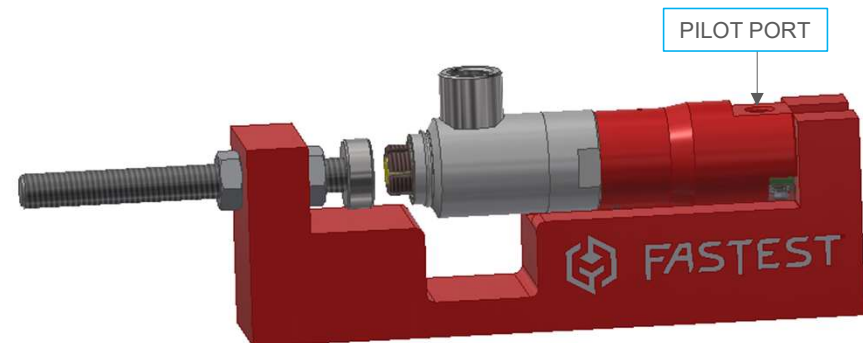
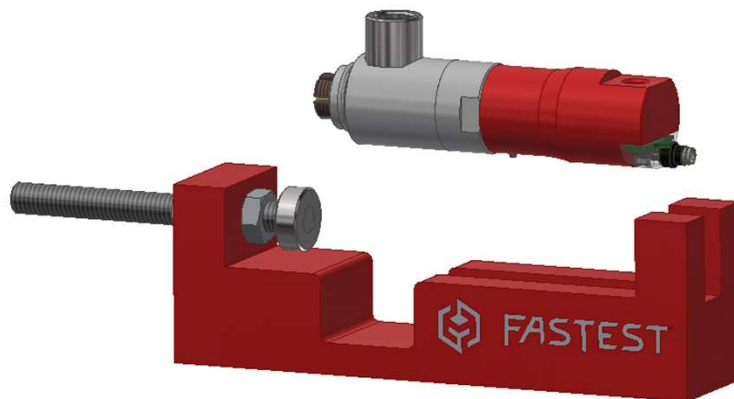
Cradle Calibration Tool

- This tool will work on FNP's body size 1 thru 4 and all FXP body sizes



CRADLE ADJUSTMENT
STUD





Why do we need the cradle?

- To achieve the second calibration point we need a way to hold the collets/shaft at a partially extended position
- The cradle tool has the adjustment to set that calibration point per the customer application

SAFE. RELIABLE . FAST.

Calibration Procedure

- Set first calibration point at rest
- Place connector in properly adjusted cradle
- Apply pilot pressure
- Set second calibration point
- There could be some trial and error to set the second point

