

CalMate™

FasTest®

Your Calibration Connection

- ✓ Finger Tighten Seals to 300 psi for Pneumatic and Hydraulic Calibration
- ✓ Safe, Reliable, Leak Tight Connections to Devices with Sanitary Flange Fittings
- ✓ Compatible with *FasTest* Quick Change Hose Assemblies
- ✓ Durable Stainless Steel Construction Available in Multiple Sizes



Connectors for Sanitary Flange Style Fittings

FasTest's new **CalMate** connector line is designed for fast, efficient and reliable connections to 1/2", 3/4", 1", 1-1/2" and 2" sanitary style flange fittings. **CalMate** connectors are easy to operate compared to traditional clamping methods and are the preferred method for creating temporary connections in metrology lab applications where volume of instruments to be calibrated is an on-going challenge.

CalMate flange connectors provide quick, temporary connections for calibrating gauges or transmitters equipped with sanitary diaphragms. For applications in process or on the bench in the lab, the connector enables devices to be connected in a fraction of the time compared to cumbersome swinging tri-clamp configurations.

When used with the **FasCal** hose solution, connectors can be changed for units of different sizes without the use of tape or sealants and no wrenches.



Applications / Configurations



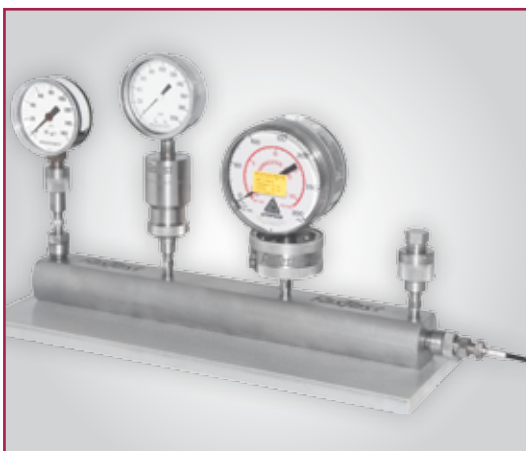
Gauges

Gauge calibration often is one of the most time consuming tasks faced by a metrology group. The time required to achieve leak tight connections can be reduced when a **CalMate** connector is used, improving metrologist's productivity. Whether the task is in process in a cramped pharmaceutical suite or on a bench in a lab, the connection will be made in seconds.



Transmitters

Calibration connections to sanitary diaphragms on transmitters in the past has been difficult. A swinging tri-clamp configuration is cumbersome to close and lock and in tight quarters difficult to apply. The **CalMate's** click and twist motion quickly locks the connector onto transmitters diaphragm, even in cramped quarters.



Manifolds

The **CalMate** can be mounted on the **FasCal** FF010 manifold. For use in lab environments, the manifold provides a solid platform capable of supporting multiple gauges or transmitters for calibrating up to four gauges at once. Manifolds can be equipped with optional **Fastest** connectors to allow changing sizes or types of connectors efficiently without the use of sealants or wrenches.

Connectorization

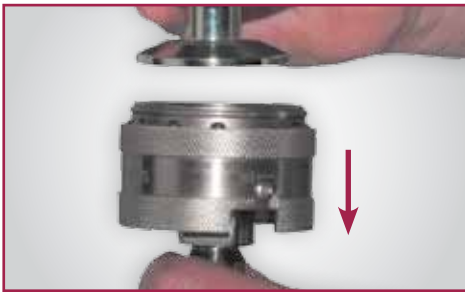
Quick Change Hose Assembly

As a component of a family of products, the **CalMate** is compatible with the **FasCal** hose assembly. The hose equipped with **FasTest** connectors attaches to the **CalMate** without the use of wrenches or sealant. Eliminating the use of sealant reduces the possibility of sealant plugging an instrument port. Changing from one size or style of connector to another is completed in a few seconds. The small diameter of the hose minimizes nitrogen usage or if a hand pump is being used, operator fatigue.

CalMate pictured with:
 Hose assembly: HP022X036
 Quick connectors: MIT-022021

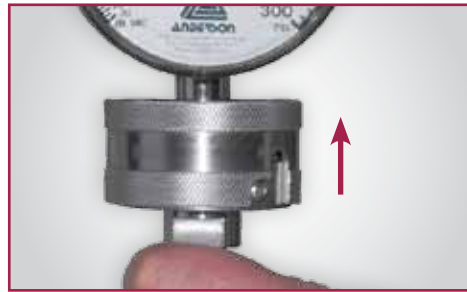


Operational Instructions



Step 1: Retract Collar

Slide collar to open position. This opens the connector locking assembly.



Step 2: Insert Diaphragm and Extend

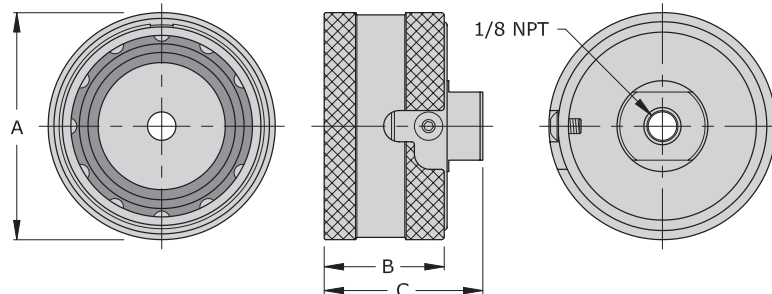
Place the diaphragm of the gauge or transmitter into the connector. Extend the collar to the locked position.



Step 3: Twist to Secure

Rotate the collar to secure the connector to the diaphragm. This rotation compresses the diaphragm against the provided gasket and creates a leak tight seal. The rotation allows the connector to adjust for variations in diaphragm flange or gasket thicknesses.

Technical Drawings



Part Number	Connects To	Diameter Dim "A"	Sleeve Length Dim "B"	Length Dim "C"	Rating PSI	Housing Material	Seal Material	Main Seals Package (5)
SA050	1/2" or 3/4"	1.560"	1.200"	1.580"	300	Stainless Steel	Neoprene	SAGB075B
SA100	1" or 1-1/2"	2.500"	1.320"	1.750"				SAGB150B
SA200	2"	3.100"	1.370"	1.800"				SAGB200B

Additional Products and Brochures from *FasTest*



Engineering & Application Guide

Engineering and Application Guide to Connectors for Pressure Testing & Processing details our complete offering for all applications.



TwistMate Connectors

Complete product line of manually threaded connectors featuring pressure assisted sealing technology for leak and pressure testing applications.



FasCal Connectors

Complete product line of connectors, hoses, manifolds and kits for fast, efficient and reliable calibration of instruments in field or lab environment applications.

Additional Services from *FasTest*



Several models of our most popular connectors and seals are available for immediate purchase in our on-line store in small quantities.

To see what models are currently available as well as other selected connectors please visit our on-line store at www.fastestinc.com or contact **FasTest** for details.



Our connector refurbishment program ensures proper connector operation and performance as well as extending the service life and warranty of your investment. Connectors routinely maintained can be refurbished economically relative to the cost of a new connector replacement. Contact **FasTest** for details.

Custom Applications - Customized products are available for unusual or unique connection requirements.

Limited Express Warranty

FasTest Inc. warrants its products against defects in workmanship and materials for 12 months from the date of sale by FasTest Inc. or its authorized distributor. This warranty is void if the product is misused, tampered with or used in a manner that is contrary to FasTest Inc.'s written recommendations and/or instructions.

FasTest Inc. does not warrant the suitability of the product for any particular application. Determining product application suitability is solely the customer's responsibility. FasTest Inc. is not liable for consequential or other damages including, but not limited to, loss, damage, personal injury, or any other expense directly or indirectly arising from the use of or inability to use its products either separately or in combination with other products.

ALL OTHER WARRANTIES EXPRESS OR IMPLIED, WHETHER ORAL, WRITTEN OR IN ANY OTHER FORM, INCLUDING BUT NOT LIMITED TO WARRANTIES OF MERCHANTABILITY OR FITNESS FOR A PARTICULAR PURPOSE ARE EXPRESSLY EXCLUDED.

The sole and exclusive remedy under this warranty is limited to replacement of the product or an account credit in the amount of the original selling price, at the option of FasTest Inc. All allegedly defective products must be returned prepaid transportation to FasTest Inc., together with information describing the product's performance, unless disposition in the field is authorized in writing by FasTest Inc.

Notifications and Copyright

Specifications in this brochure are subject to change without notice. FasTest also reserves the right to make modifications and makes no guarantee of the accuracy of the information contained herein.

© 2011 FasTest Inc. All rights reserved. No part of this publication may be reproduced without written permission.